

QA4TM

Mobile Surgery System

Surgical versatility guide



AneticAid

Innovative **Medical** Technology - **Practically Applied**

Innovative **Medical** Technology - **Practically Applied**

Anetic Aid is a world-leading designer and UK-based manufacturer of medical devices, used extensively for patient transport, treatment and recovery.

Our mission

To deliver best outcomes for patients and best experiences for clinical teams: we listen carefully and understand needs.

This allows us to design, develop and manufacture – and to establish partnerships – that lead to the supply of innovative, intuitive, high-quality medical devices for patient transport, treatment and recovery.

The highly versatile QA4 Mobile Surgery System evidences this approach, and the following pages detail the attachments and accessories which can be used to customise it for all main surgical specialisms.

They range from simple arm and hand tables to sophisticated dual-articulating headrests, and from lithotomy stirrups to orthopaedic fixation systems (for procedures such as total hip replacement).

This guide covers the options for ordering accessories as part of a QA4 build specification and availability to purchase separately as stand-alone items.

Contents

BREAST Supine / Fowler	3
ENT (ear, nose and throat) Supine	4-5
GENERAL Supine / Prone / Trendelenburg / Reverse Trendelenburg	6-7
GYNAECOLOGY Supine / Trendelenburg	8-9
HEAD AND NECK / OMFS Supine	10-11
OPHTHALMOLOGY Supine	12-13
ORTHOPAEDIC Supine / Fowler / Prone / Lateral	14-17
UROLOGY Supine / Trendelenburg	18-19
VASCULAR Supine	20-21
OPTIONAL EXTRAS	22
QA4 ACCESSORY STAND	23



DESIGN & INNOVATION

Combining industry knowledge with
innovative technology



MADE IN THE UK

Designed and produced at our UK manufacturing
facility using the latest engineering techniques

BREAST

Positioning: **Supine** | Fowler | Prone | Trendelenburg | Reverse Trendelenburg | Lateral



ACCESSORIES



Code: 10400-UK or 10400-EU
Armboard Rotatable



Code: 21355
Leg section – Articulating



Manufacturer, designer and supplier of high quality medical equipment around the world



Unique manufacturer-backed Lifetime Warranty Scheme

BUILD OPTIONS



Code: 22322
Headrest – Full-width Articulating



Code: 22330 / 22331
Headrest – Full-width Articulating
with UK / EU Side Bar



Code: 22345
Backrest Handles Removed

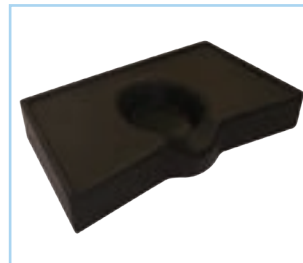
ACCESSORIES



Code: 21322
Headrest – Full-width Articulating



Code: 21322-UK or 21322-EU
Headrest – Full-width Articulating
with Side Bar



Code: 10180
Rubens Pillow



Code: 10220
Narrow Arm Table



Code: 10400-UK / 10400-EU
Armboard Rotatable



Code: 10774 / 10775
Easy Armboard
with EU / UK Side Bar



DESIGN & INNOVATION



MADE IN THE UK



GLOBAL DISTRIBUTION

ENT

(ear, nose and throat)

Positioning:

Supine

Fowler

Prone

Trendelenburg

Reverse Trendelenburg

Lateral



Secure positioning for the head and neck

BUILD OPTIONS



Code: 22322
Headrest – Full-width Articulating



Code: 22330 / 22331
Headrest – Full-width Articulating
with UK / EU Side Bar

ACCESSORIES



Code: 21322
Headrest – Full-width Articulating



Code: 21322-UK or 21322-EU
Headrest – Full-width Articulating
with Side Bar



Code: 10220
Narrow Arm Table



Code: 10400-UK or 10400-EU
Armboard Rotatable



Code: 10774 / 10775
Easy Armboard
with EU / UK Side Bar



Code: 10788 or 10788-EU
Width Extenders



Code: 10275
Vacuum Beanbag Full Body



Code: 10279
Vacuum Beanbag Full Length



Code: 10787
Shoulder Supports



Code: 10755
Standard Stirrups



Code: 10757
Finned Stirrups



Code: 10758
Heavy Duty Stirrups

Specialist accessories and positioning attachments

GENERAL

Positioning: **Supine** Fowler Prone Trendelenburg Reverse Trendelenburg Lateral



DESIGN & INNOVATION



MADE IN THE UK



GLOBAL DISTRIBUTION

ACCESSORIES



Code: 10400-UK or 10400-EU
Armboard Rotatable



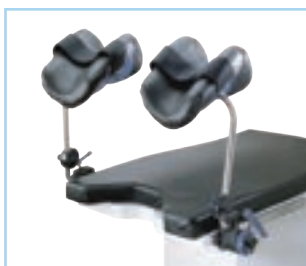
Code: 10788 or 10788-EU
Width Extenders



Code: 10787
Shoulder Supports



Code: 21397-UK or 21397-EU
Urology / Retrograde Pyelography /
Gynaecology Extension –
with UK or EU Side Bar



Code: 10765
Knee Crutch Stirrups



Code: 10765-A1
Cysto Knee Crutch Stirrups



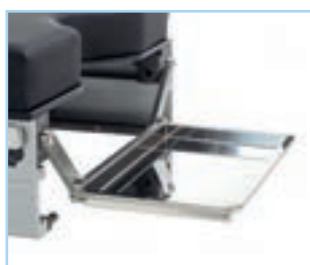
Code: 10755
Standard Stirrups



Code: 10757
Finned Stirrups



Code: 10758
Heavy Duty Stirrups



Code: 10235
Perineal Instrument Tray



Code: 10275
Vacuum Beanbag Full Body



DESIGN & INNOVATION



MADE IN THE UK



GLOBAL DISTRIBUTION

Positioning: **Supine** Fowler Prone Trendelenburg Reverse Trendelenburg Lateral



Lithotomy stirrups with built-in patient protection

BUILD OPTIONS



Code: 22322
Headrest – Full-width Articulating



Code: 22330 / 22331
Headrest – Full-width Articulating
with UK / EU Side Bar



Code: 22345
Backrest Handles Removed

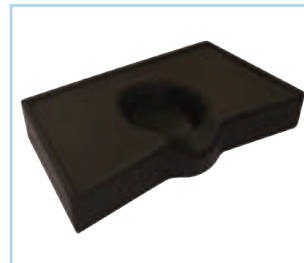
ACCESSORIES



Code: 21322
Headrest – Full-width Articulating



Code: 21322-UK or 21322-EU
Headrest – Full-width Articulating
with Side Bar



Code: 10180
Rubens Pillow



Code: 10220
Narrow Arm Table



Code: 10400-UK or 10400-EU
Armboard Rotatable



Code: 10774 / 10775
Easy Armboard
with EU / UK Side Bar

Headrest options and support for non-operative arms

HEAD AND NECK / OMFS

(oral and maxillofacial surgery)

Positioning:

Supine

Fowler

Prone

Trendelenburg

Reverse Trendelenburg

Lateral



DESIGN & INNOVATION



MADE IN THE UK



GLOBAL DISTRIBUTION

BUILD OPTIONS



Code: 22325
Headrest – Dual-articulating



Code: 22345
Backrest Handles Removed



Code: 22355
Leg Section – Articulating

ACCESSORIES



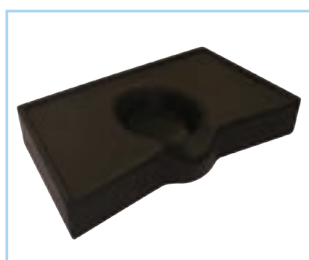
Code: 21322
Headrest – Full-width Articulating



Code: 21322-UK or 21322-EU
Headrest – Full-width Articulating
with Side Bar



Code: 21325
Headrest – Dual-articulating



Code: 10180
Rubens Pillow



Code: 10545
Theatre Pillow



Code: 21365
Drape Screen /
Oxygen Delivery Bar



DESIGN & INNOVATION



MADE IN THE UK



GLOBAL DISTRIBUTION

OPHTHALMOLOGY

Positioning: **Supine** Fowler Prone Trendelenburg Reverse Trendelenburg Lateral



Movement in three planes with dual-articulating head section

BUILD OPTIONS



Code: 22353 / 22354
Leg Section – Articulating
with UK / EU Side Bar



Code: 22357 / 22358
Leg Section
with UK / EU Side Bar

ACCESSORIES



Code: 10220
Narrow Arm Table



Code: 10400-UK or 10400-EU
Armboard Rotatable



Code: 10774 / 10775
Easy armboard
with EU / UK Side Bar



Code: 10233
Extended Arm Table



Code: 10425-UK
Arm and Hand Surgery Table



Code: 10773
Lateral / Prone Arm Support
c/w Pad



Code: 10195
Carter Braine Arm Support



Code: 10200
Lateral Support



Code: 10205
Pelvic Support

Accessories to maximise surgical access

ORTHOPAEDIC

Positioning: **Supine** | Fowler | Prone | Trendelenburg | Reverse Trendelenburg | Lateral



DESIGN & INNOVATION



MADE IN THE UK



GLOBAL DISTRIBUTION

ACCESSORIES



Code: 10786
Beach Chair



Code: 10470
Hip Fix™ System



Code: 10770
Lateral Brace Set



Code: 10160 / 10161 / 10162
Montreal Laminectomy Support



Code: 10788 or 10788-EU
Width Extenders



Code: 10275 / 10279
Vacuum Beanbag
Full Body / Full Length



Code: 10440-A1
Tibia Support



Code: 10776
Arthroscopic Stress Post



Code: 10785
Knee Stabiliser



Code: 21353 / 21354
Leg Section –
Articulating with Side Bar



Code: 21357 / 21357E
Leg Section with Side Bar



Code: 21397-UK or 21397-EU
Urology / Retrograde Pyelography /
Gynaecology Extension –
with UK or EU Side Bar



DESIGN & INNOVATION



MADE IN THE UK



GLOBAL DISTRIBUTION

ORTHOPAEDIC

Positioning:

Supine

Fowler

Prone

Trendelenburg

Reverse Trendelenburg

Lateral



Offering accurate alignment and stability

ACCESSORIES



Code: 10400-UK or 10400-EU
Armboard Rotatable



Code: 10788 or 10788-EU
Width Extenders



Code: 10787
Shoulder Supports



Code: 10755
Standard Stirrups



Code: 10757
Finned Stirrups



Code: 10758
Heavy Duty Stirrups



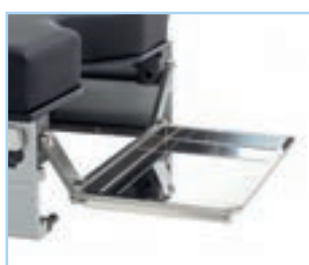
Code: 21397-UK or 21397-EU
Urology / Retrograde Pyelography /
Gynaecology Extension –
with UK or EU Side Bar



Code: 10765
Knee Crutch Stirrups



Code: 10765-A1
Cysto Knee Crutch Stirrups



Code: 10235
Perineal Instrument Tray



Code: 10275
Vacuum Beanbag Full Body

Attachments for urology procedures

Positioning: **Supine** Fowler Prone **Trendelenburg** Reverse Trendelenburg Lateral



DESIGN & INNOVATION



MADE IN THE UK



GLOBAL DISTRIBUTION

ACCESSORIES



Code: 10400-UK or 10400-EU
Armboard Rotatable



Code: 10788 or 10788-EU
Width Extenders



Code: 21397-UK or 21397-EU
Urology / Retrograde Pyelography /
Gynaecology Extension –
with UK or EU Side Bar



Code: 10755
Standard Stirrups



Code: 10757
Finned Stirrups



Code: 10758
Heavy Duty Stirrups



DESIGN & INNOVATION



MADE IN THE UK



GLOBAL DISTRIBUTION

Positioning: **Supine** Fowler Prone Trendelenburg Reverse Trendelenburg Lateral



Table extensions and stirrups for additional support

OPTIONAL EXTRAS

BUILD OPTIONS



Code: 22315
Side Bar – EU – 25 x 10mm



Code: 21175
Department ID



Code: 21393
Oxygen Cylinder Bracket –
for CD Sized Cylinder



Code: 21159
Paper Roll Holder
(up to 620mm wide) –
*Not suitable for use with Leg Section –
Articulating Variants*

ACCESSORIES



Code: 21390
Push / Pull Bar



Code: 21395
Foot-end Extension –
with 30mm Deep Mattress



Code: 21347
Side Rail Cover – PADDED –
for Single-piece Side Rail –
GREY Material – PAIR



Code: 21348
Side Rail Cover – PADDED –
for Single-piece Side Rail –
CHILD PRINT Material – PAIR



Code: 10248
Clamp – Rotary Socket –
Stainless Steel – Hook-on –
Universal for UK / EU / US Side Bar



Code: 10250
Clamp – Universal
(Socket and Rail) – Handwheel –
for UK / EU / Swiss Side Bar



Code: 10761
Clamp – Basic Blade Handwheel –
for UK / EU Side Bar

Avoid clutter with compact storage solution

QA4 ACCESSORY STAND

Benefits:

Adaptable

Robust

Multi-functional

EU Side Bar

Accessories need storage when not in use – and we have the perfect solution.

Our accessory stand is a compact, mobile storage system which helps to keep a busy theatre environment tidy and uncluttered.



Code: 21370

QA4 Accessory Stand – W730 x D720 x H1375mm



DESIGN & INNOVATION



MADE IN THE UK



GLOBAL DISTRIBUTION

SEE
ALSO



QA3 Ophthalmic Stretcher:

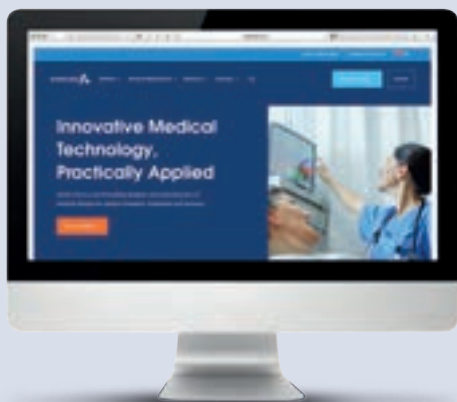
Outstanding surgical access –
exceptional patient comfort

PLUS

our other product areas



Scan this code to
start a **WhatsApp** chat
with Anetic Aid



OUR PRODUCT AREAS



For more information on any of our products or service contracts, call:
sales@aneticaid.com **+44 (0)1943 878647** aneticaid.com



DESIGN & INNOVATION



MADE IN THE UK



GLOBAL DISTRIBUTION

Innovative **Medical** Technology - **Practically Applied**



Anetic Aid Ltd, Sapper Jordan Rossi Business Park, Otley Road, Baildon BD17 7AX, UK



ISSUE 1 – MAY 2022